

**This electronic collection of documents is provided  
for the convenience of the user  
and is Not a Certified Document –**

**The documents contained herein were originally issued  
and sealed by the individuals whose names and license  
numbers appear on each page, on the dates appearing  
with their signature on that page.**

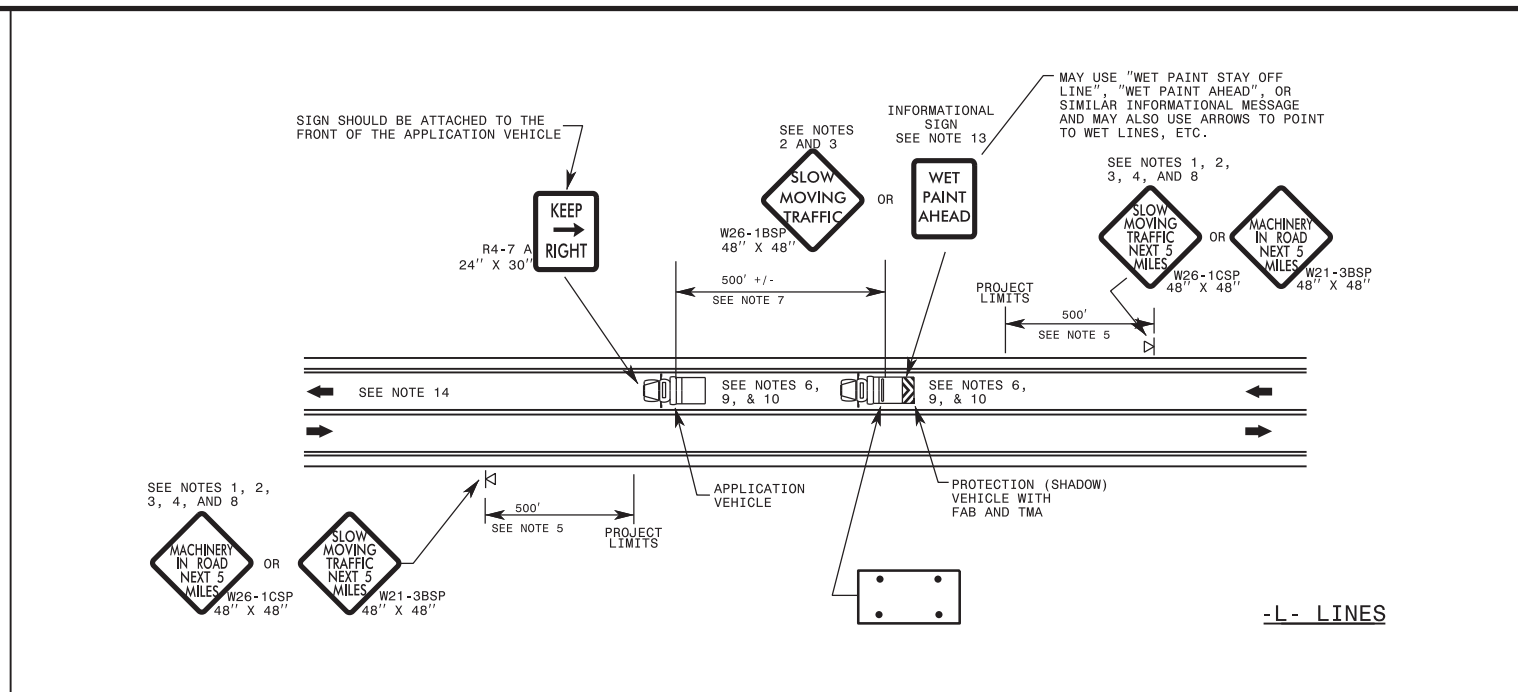
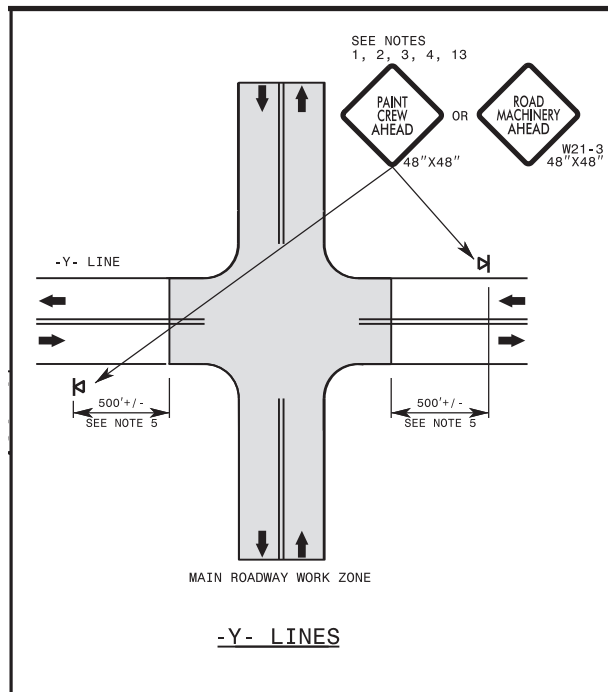
**This file or an individual page  
shall not be considered a certified document.**

<b>ROUTE SCHEDULE</b>		<i>Instructions for route schedule: Routes in black text to be completed in year 2018; will repeat again in year 2020. Routes in red text are to be completed in year 2019.</i>				Lense Color Combinations				2018 & 2020	2019
County	Location	From	To	Mileage	Y-Y	R-W	Y-Y	R-W	Total	Total	
<b>Cherokee</b>	SR 1548 (Old Hwy 64)	US 64	Clay Co. Line	0.961	58				58		
	US 19 Bus Murphy	US 19/64/74/129	US 19/74/129	3	247	123			370		
	US 19 Bus Andrews	US 19/74/129 (Skip City Lights)	US19/64/74/129	2.5	219	30			249		
	SR 1326 (Tenn. St./Peachtree S.)	Jackson St near US 64	End of N.P.J Joe Brown Hwy	1.59	150	76			226		
	US 64	US 74	Clay County Line	4.33	492	36			528		
	NC 60	US 74	Georgia State Line	5.4	683	676			1359		
	SR 1326	Bridge Over Lake	SR 1354	5.9	650				650		
	US 19/129	US74	Georgia State Line	3.8	252				252		
	NC 141	US74	Clay Co. Line	8.76	580				580		
		<b>US 74</b>	<b>TN State Line</b>	<b>Macon Co Line</b>	<b>44.36</b>			<b>1160</b>	<b>6067</b>		<b>7227</b>
	<b>NC 294</b>	<b>US 64</b>	<b>TN state line</b>	<b>13.5</b>			<b>1104</b>	<b>1</b>		<b>1105</b>	
<b>Clay</b>	<b>US 64</b>	<b>SR 1168 (Old 64)</b>	<b>Macon County Line</b>	<b>8.96</b>			<b>609</b>	<b>0</b>		<b>609</b>	
	US 64	SR 1100 Pavement Joint	SR 1147 Pavement Joint Oak Forest	1.07	410	336			746		
	<b>US 64</b>	<b>Macon Co. Line</b>	<b>SR 1168</b>	<b>9.09</b>			<b>607</b>	<b>0</b>		<b>607</b>	
	US 64	Cherokee County Line	SR 1100 Old US 64	7.25	551	11			562		
	US 64	SR 1168 Vineyard Rd.	SR 1147 Oak Forest	8.84	559	18			577		
	SR 1307 (Woods Rd.)	SR 1366/SR 1140 intersection	<b>Just passed 1346</b>	10.12	1452				1452		
	SR 1100 (Phillips Rd.)	Cherokee County Line	<b>US 64</b>	10.8	922	3			925		
	NC 69	US 64	Georgia State Line	3.5	241	10			251		
<b>Graham</b>	US 129	N. City Limit Robbinsville (SR 1156)	Swain County Line	15.21	1512				1512		
	US 129	SR 1200	NC 143	11.2	1113	13			1126		
	NC 143	NC 28	US 129 (Robbinsville)	8.69	860	24			884		
	NC 28	Swain Co. Line	SR 1245	18.08	2387				2387		
<b>Haywood</b>	<b>I-40</b>	<b>Tennessee State Line</b>	<b>MP 36.71</b>	<b>36.71</b>			<b>4864</b>	<b>0</b>		<b>4864</b>	
	NC 209	SR 1355 (Riverside)	Palmer Drive	2.3	258	10			268		
	NC 209	SR 1334 (Lower Fines Creek)	Madison County Line	3.9	459				459		
	NC 209	R.R. Bridge	I-40	3.3	244	46			290		
	<b>US 19</b>	<b>Jackson Co Line</b>	<b>Buncombe County Line</b>	<b>23.86</b>			<b>1857</b>	<b>2589</b>		<b>4446</b>	
	<b>US 23 Bus.</b>	<b>Pavement Joint of New Project</b>	<b>R.R. Bridge</b>	<b>0.6</b>			<b>80</b>	<b>174</b>		<b>254</b>	
	<b>US 19-23</b>	<b>E.C.L. Clyde</b>	<b>NC 215</b>	<b>3.2</b>			<b>363</b>	<b>709</b>		<b>1072</b>	
	<b>US 74</b>	<b>Jackson Co Line</b>	<b>I 40</b>	<b>21.42</b>			<b>444</b>	<b>2981</b>		<b>3425</b>	
	<b>US 276</b>	<b>Transylvania Co. Line</b>	<b>I 40</b>	<b>32.21</b>			<b>2205</b>	<b>1155</b>		<b>3360</b>	
	NC 215	I-40	US 19/23	1.84	250	455			705		
	NC 215	US 276	SR 1111	2.84	419	4			423		
	<b>SR 1929 (Hospital Dr.)</b>	<b>US 23 BUS</b>	<b>SR 1800</b>	<b>1.03</b>			<b>153</b>	<b>72</b>		<b>225</b>	
	NC 110	US 276	US 19/23/74	5.41	406	86			492		
	SR1924/NC215/SR1898/SR1882	US 276	NC 110	1.45	125				125		
	NC 215 Bethel Area	US 276	SR 1924	0.18	11				11		
	<b>SR 1243 Old Balsm Rd/US 23 BUS</b>	<b>Red Light</b>	<b>US 74</b>	<b>6.5</b>			<b>431</b>	<b>64</b>		<b>495</b>	
	SR 1527/SR 1800	SR 1523	US 19/23/SR 1532	2.112	190	14			204		
	SR 1646	NC 209	SR 1527	1.1	159	43			202		
	SR 1004	SR 1596	Buncombe County Line	3.7	260	18			278		
	SR 1523 Old 19/23 2.72 mi.	NC 209	NC 215	2.98	245	5			250		
SR 1818	US 23 Business	SR 1376 Old Country Road	2.5	326	6			332			
<b>SR 1812 Racocon Rd</b>	<b>SR 1818 Main Street</b>	<b>US 276</b>	<b>1.5</b>			<b>185</b>	<b>0</b>		<b>185</b>		

County	Location	From	To	Mileage		Y-Y	R-W		Y-Y	R-W		Total	Total	
Henderson	I-26	Buncombe County Line	Polk County Line	17.41					2262	0			2262	
	NC 280	Buncombe County Line	Transylvania County Line	9.7		960	1509					2469		
	US 25	MP 9	South Carolina State Line	9		244	1632					1876		
	US 25 & US 176	NC 225	End of 5 Lane	5.1		1062	1345					2407		
	US 25	SR 1528 (Brook Side Camp Rd)	NC 191	3		585	667					1252		
	US 25	Buncombe Co. Line	I-26	3.39		532	537					1069		
	US 64	Transylvania Co. Line	US 74A	25.8					2294	428				2722
	NC 225 (Old US25)	South City Limit Hendersonville	North of SR 1836	5.9		739	67						806	
	NC 225	Exit US 25	US 25 S. Exit	4.3		609							609	
	NC 191	US 25 (Hendersonville)	NC 280	5.3		1012	166						1178	
	NC 191	Buncombe County Line	NC 280	1.7		136	6						142	
	US 74A	Rutherford Co. Line	Buncombe Co. Line	6.819		834							834	
	SR 1525	US 64 Dana Rd.	SR 1783	4.25					552	22				574
	SR 1180 (Blyth St.)	NC 191	SR 1189	1.34					98	12				110
	SR 1383 (Stoney Mtn.)	SR 1381	US 25	1.94		186	4						190	
	SR 1358 (Fanning Bridge)	US 25	Buncombe Co. Line	1.185		197	10						207	
	SR 1127 (Kanuga Rd.)	SR 1123 Little River	Transylvania County Line	7.4		752							752	
	SR 1534 (Naples)	US 25	SR 1006	1		149	3						152	
	SR 1528 (Brookside)	SR 1006	US 25	1.1		156							156	
	SR 1381 (Mountain Rd.)	US 25	NC 191	1.7		196	14						210	
	SR 1171 (Willow Rd.)	SR 1137 Stop Sign	SR 1127	1.886		123							123	
	SR 1164 (Erkwood Dr.)	NC 225	SR 1127	1.34					92	6				98
	SR 1722 (Old Spartanburg Rd.)	SR 1783	US 25 BUS	0.2		49	9						58	
	SR 1779 (Airport Rd.)/1757/1755	SR 1793	SR 1722	0.72		52	5						57	
	SR 1503 (Clear Creek Rd.)	SR 1006	Henderson City Limits	2.66		173	8						181	
	SR 1508 (Berkley Rd.)	SR 1519	SR 1503	1.74		139	16						155	
	SR 1547 (Old Airport Rd.)	SR 1545	US 25	0.87		79	4						83	
	SR 1545 (Cane Creek)	US 25	Buncombe Co. Line	1.435					113	0				113
	SR 1551 (Mills Gap Rd.)	SR 1545	Buncombe Co. Line	1.97					144	6				150
	SR 1553 (Hoopers Cr. Rd.)/SR1569	SR 1551	SR 1696	2.551		239							239	
	SR 1793 Tracey Grove Rd.	SR 1525 Dana Rd.	SR 1006 Howard Gap	3.09		210							210	
	SR 1734 Union Hill/SR1897 Sugar L.	US 64	SR 1783 Upward Rd.	3.817		615							615	
	SR1172 Hebron Rd./SR1173	SR 1171	SR 1186	2.412					196	0				196
SR 1361	SR 1358 Fanning Bridge	US 25	0.65		57	4						61		
SR 1783	I-26	SR 1734	7.4		674							674		
SR 1006	US 25 (Near Fletcher)	SR 1525	9.6		1369	46						1415		
SR 1006	SR 1525	END OF ROAD										0		
SR 1127	US 25 Business	SR 1123	3.91		542	17						559		
US 176	End of 5-Lane	Polk County Line	4		548							548		
SR 1365	NC 191	SR 1345	3		410	4						414		
SR 1793	SR 1525	SR 1006	3.09		198	4						202		
SR 1345 & SR 1352 & SR 1351	US 25	NC 191	2.5		404	45						449		
SR 1309 & SR1310 & SR1312	NC 191	US 64	2.7		369	4						373		
Jackson	NC 107	SR 1001 (Speedwell)	East of SR 1002 end of Bike lane	1.84		243	96					339		
	NC 107	Stop at Sylva Split	SR 1001 Traffic Light	6.62		445	1257					1702		
	NC 107	NC 281	US 64 (Near Cashiers)	14.7		972						972		
	NC 107	US 64	South Carolina State Line	8.3		1052	6					1058		
	NC 107	East of SR 1002 end of Bike Lane	NC 281	8.85				585					585	
	US 441	1000' North SR 1310 (PJ)	US 74	5.7		140	1505					1645		
	US 441	SR 1300 (Pumpkin Town)	Macon County Line	2.16				278	286				564	
US 441	US 74	US 19	4.83				662	990				1652		

County	Location	From	To	Mileage		Y-Y	R-W		Y-Y	R-W		Total	Total
	US 441 Bus.	US 441	US 19	0.6		90	139					229	
	NC 281	Transylvania County Line	South Carolina State Line	1		94						94	
	NC 116	NC 107	US 441	4.4		635	47					682	
	US 19	441 Bus	Haywood Co Line	14.68					1086	114			1200
	US 64	Macon County Line	Transylvania Co Line	11.97					1025	104			1129
	US 74	Swain Co Line	SR 1432	22.03					3515	0			3515
	US 23 BUS	US 74	NC 107	1.41		275	185					460	
	US 23 BUS	End of Sylva Split W. end	US 23/441 Dillsboro	1.87		91	26					117	
	SR 1001 (Speedwell Rd.)	NC 107	SR 1157 (Cullowhee Mnt Rd.)	1.015		132						132	
	SR 1531 (Old US 19A)	US 74	Swain Co. Line	0.53		37						132	
	SR 1432 (Skyline Dr.)	US 23 BUS	US 23/74	6.925					546	6			552
	SR 1513 Grindstaff Rd.)	US 23/74	US 23 Street Lights	0.495		40	15					55	
	SR 1367 Little Savannah Rd.	NC 107	NC 116	4.893					544	0			544
<b>Macon</b>	US 64	Project Bilu (US441) (PJ)	NC 106	17.3		1934	188					2122	
	US 64	SR 1448 West End	Clay Co. Line	2.36		150						150	
	US 64	End of 4-Lane (Near Bridge)	SR 1448 Charles Nolan	3.22		621						621	
	US 64	SR 1602	Jackson County Line	5.2		711	15					726	
	US 441	Jackson Co. Line	Georgia State Line	21.9					1990	3863			5853
	NC 106	Georgia State Line	US 64	10.45		1059	25					1084	
	NC 28	SR 1321	SR 1378 Bennett Rd.	3.47		231						231	
	NC 28	Bilo Exit Ramp Pavement Mark	US 441 BUS	1.03		125	21					146	
	SR 1442 (Palmer St.)	US 64	US 441 BUS	4.95					415	33			448
	SR 1154 (Roller Mill Rd.)	SR 1442	US 441	1.12		104	8					112	
	SR 1323 (Iotla Rd.)	NC 28	US 441 BUS	1.414		63						63	
	SR 1667 (Wells Grove Rd.)	US 441 BUS	Stop Sign @SR1666/67/68	2.289		182						182	
<b>Polk</b>	I-26	Henderson County Line	S.C. State Line	13.14					2067	0			2067
	NC 108	NC 9 (Mills Spring)	Rutherford County Line	7.2					613	0			613
	NC 108	Polk High School	NC 9 (Mills Spring)	2.62		476	44					520	
	NC 108	I-26	Tryon City Limits	3.5		429	31					460	
	NC 108	NC 9	SR 1318	1.62		139						139	
	NC 108	SR 1317	Rutherford Co. Line	2.66		262						262	
	On Ramp NC108 W.	NC 108	US 74 (Overhead Bridge)									0	
	US 176/NC 108	N. Tryon City Lights	Up to present Markers	0.356		86	11					97	
	US 74	I-26	Rutherford Co Line	20.495					2156	0			2156
	US 176	S.Carolina State Line	St. Lights Tryon SR1116	1.31					211	14			225
	NC 9	NC 108	Rutherford Co. Line	7.95					590	0			590
	NC 9	SR 1005	South Carolina State Line	5.22		660						660	
<b>Swain</b>	SR 1368	US 19	US 441	2		227						227	
	US 441 New Castings	W. Intersection Light US 19/441	Park Line	2.7		402	126					528	
	US 19 Whittier Turn off N.P.					35	11					46	
	US 19	SR 1166 Shepherds Creek	SR 1195	5.92		1035	121					1156	
	US 19	SR 1159 Spring Rd.	SR 1166 Shepherds Creek	4.19		116	18					134	
	SR 1195	Jackson Co. Line	US 19	1.33		116						116	
	US 129	Graham Co. Line	Tenn. State Line	2.823		384						384	
	SR 1159	US 74	US 19 Bus. (Near Bryson)	0.92		77	171					248	
	US 74	Macon Co Line	Jackson Co Line	24.77					1796	1847			3643
<b>Transylvania</b>	NC 280	Henderson County Line	SR 1510	5.1		495	711					1206	
	NC 280	SR 1510	Existing Markers (Bridge)	1.3		148	357					505	
	NC 281	US 64	Jackson County Line	7.9		677						677	

County	Location	From	To	Mileage		Y-Y	R-W		Y-Y	R-W		Total	Total
	SR 1528 (Crab Creek Rd.)	Henderson Co. Line	US 64	4.3		262	8					270	
	SR 1504 (Old Hendersonville Hwy.)	US 64 BUS	SR 1533	2.63		211						211	
	SR 1512 (Ecusta Rd.)	US 276/64	SR 1504	1.34		130	40					170	
	SR 1610/1611/1612/1546	US 64/276	US 276	1.533		196	8					204	
	SR 1388	US 64	US 178	2.8		282	20					302	
	US 64	Jackson Co Line	Henderson Co Line	30.94					2466	1180			3646
	US 178	US 64	SR 1388 (Traffic Signal)	0.8		109	22					131	
	US 276	Haywood Co. Line	SC State Line	31.37					3172	976			4148
	SR 1504	US 64 Bus	SR 1528	2.63		357	4					361	
			<b>Totals</b>	949.316		48026	13405		43530	23699		61526	67229



**GENERAL NOTES**

- 1- THE FOLLOWING OPTIONS MAY BE USED FOR ADVANCE WARNING SIGNS:
  - A. TRUCK MOUNTED SIGNS
  - B. TRUCK MOUNTED CHANGEABLE MESSAGE SIGN (CMS)
  - C. PORTABLE MOUNTED ADVANCE WARNING SIGNS (MUST CIRCLE TO PICK UP SIGNS)
  - D. PORTABLE CHANGEABLE MESSAGE SIGN (CMS) (MUST CIRCLE TO PICK UP SIGNS)
- 2- IF SPACE LIMITATIONS ON SHOULDER PROHIBIT A 48" X 48" SIGN, A SMALLER SIGN CAN BE USED WITH APPROVAL FROM ENGINEER.
- 3- SIGNS ON VEHICLES SHOULD BE MOUNTED A MINIMUM OF ONE (1) FOOT FROM THE GROUND AND SHOULD NOT BLOCK THE MOTORIST'S SIGHT OF THE FLASHING ARROW BOARD AND/OR WARNING LIGHT(S).
- 4- GROUND MOUNTED ADVANCED WARNING SIGNS SHOULD BE MOUNTED A MINIMUM OF ONE (1) FOOT FROM THE GROUND TO BOTTOM OF SIGN.
- 5- SIGN SPACING SHOULD BE ADJUSTED FOR HORIZONTAL AND VERTICAL CURVES, ETC. TO IMPROVE SIGHT DISTANCES.
- 6- ADDITIONAL VEHICLES SHOULD BE USED IN WORK CARAVAN TO FACILITATE DRYING OF PAVEMENT MARKING MATERIAL (TMAs ARE OPTIONAL ON THESE ADDITIONAL VEHICLES). HOWEVER, THE FIRST VEHICLE MOTORISTS SEE IN THE TRAVEL LANE SHALL HAVE A TMA.
- 7- ADJUST DISTANCE AS NEEDED TO PREVENT MOTORISTS FROM ENTERING SPACE BETWEEN THE APPLICATION AND PROTECTION VEHICLE. DISTANCE CAN BE LENGTHENED TO ACCOMODATE SIGHT DISTANCE NEEDS.
- 8- WORK ZONE SHOULD NOT EXCEED FIVE (5) MILES IN LENGTH. ROUND UP MILEAGE TO NEXT WHOLE MILE.
- 9- RADIO COMMUNICATION BETWEEN VEHICLES IS REQUIRED.

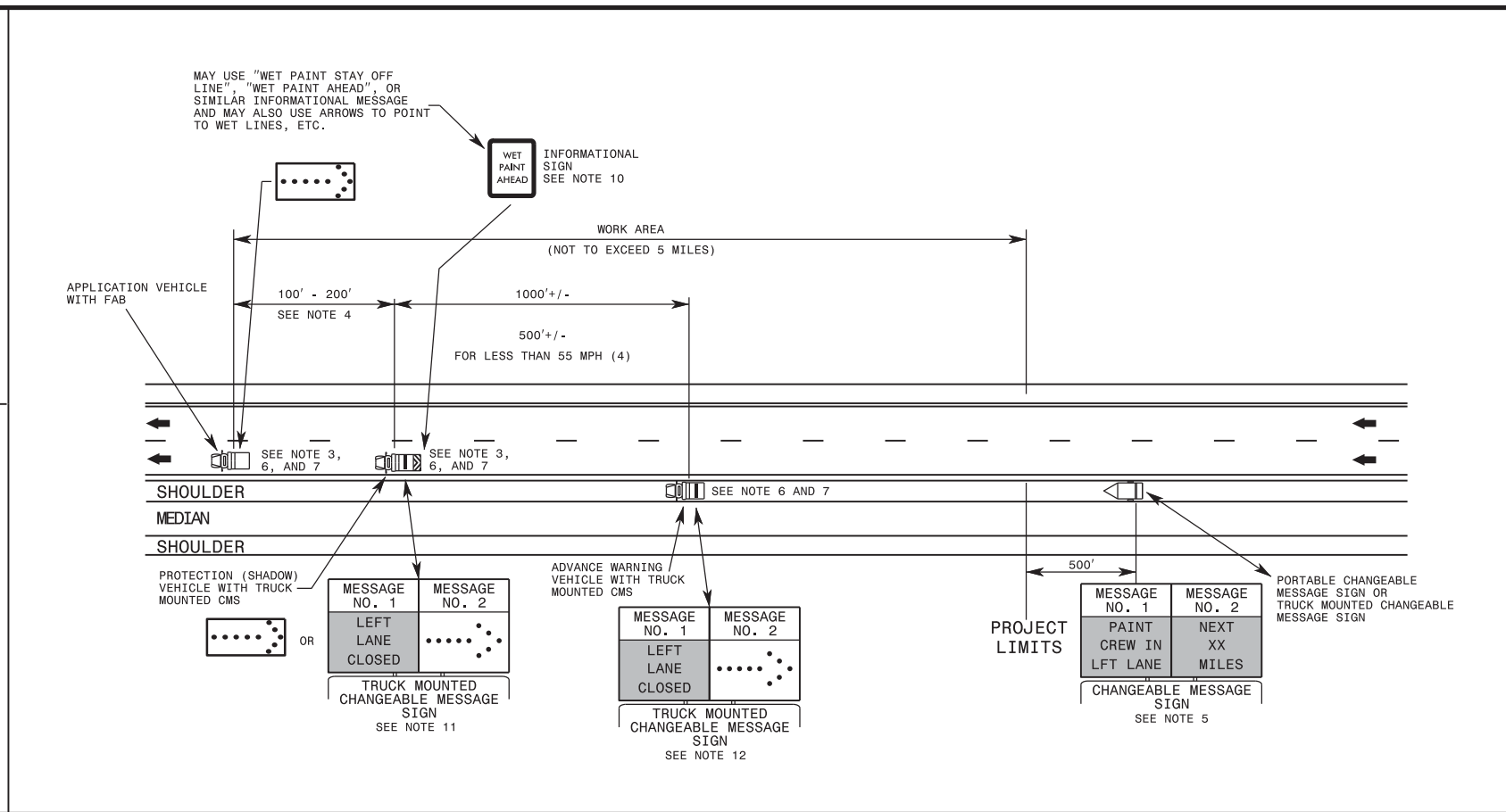
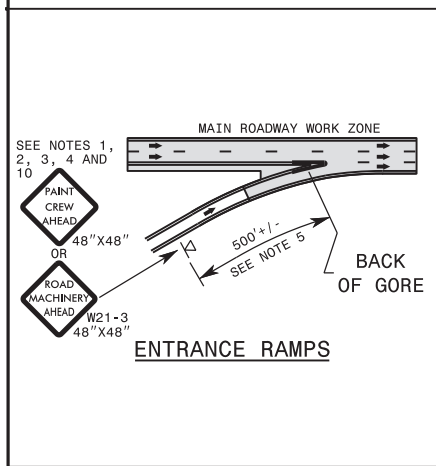
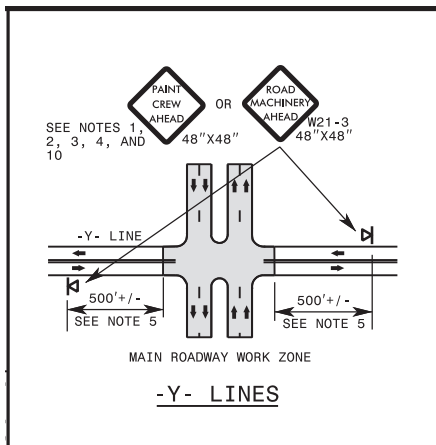
- 10- IF WORK IS PERFORMED AT NIGHT, THE WORK AREA MUST BE ILLUMINATED WITH MACHINE AND/OR TOWER LIGHTS AS APPROVED BY THE ENGINEER.
- 11- ALL TRAFFIC CONTROL DEVICES WILL BE CONSIDERED INCIDENTAL TO THE PAY ITEMS FOR PAVEMENT MARKING AND MARKERS.
- 12- INFORMATIONAL SIGNS SHOULD BE ACTIVITY SPECIFIC, i.e. "PAINT CREW IN ROAD". SIGNS MAY BE RECTANGULAR OR DIAMOND SHAPE. SIGN SIZE SHOULD BE BASED ON THE MOTORIST ABILITY TO RECOGNIZE SIGN WHEN TRAVELING FIVE (5) MILES ABOVE POSTED SPEED LIMIT.
- 13- IF A LEAD VEHICLE IS ADDED TO OPERATION, IT SHOULD HAVE THE SAME ADVANCE WARNING SIGNS AS THE APPLICATION VEHICLE SHOWN BELOW.

LEGEND	
	PORTABLE SIGN
	DIRECTION OF TRAFFIC FLOW
	APPLICATION VEHICLE WITH WARNING LIGHT(S)
	PROTECTION VEHICLE WITH TRUCK MOUNTED ATTENUATOR (TMA) AND WARNING LIGHT(S)
	FLASHING ARROW BOARD (96"X48" MIN.), "CAUTION MODE"

STATE OF NORTH CAROLINA  
 DEPT. OF TRANSPORTATION  
 DIVISION OF HIGHWAYS  
 RALEIGH, N.C.

ROADWAY STANDARD DRAWING FOR  
**TEMPORARY LANE CLOSURES**  
 MOVING OPERATION CARAVAN (OPERATIONS TRAVELING 3 MPH OR FASTER) PLACING PAVEMENT MARKING OR MARKERS ON 2-LANE, 2-WAY ROADWAYS

1-18  
 SHEET 11 OF 14  
**1101.02**



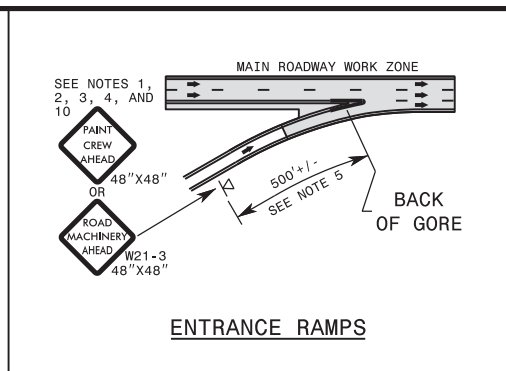
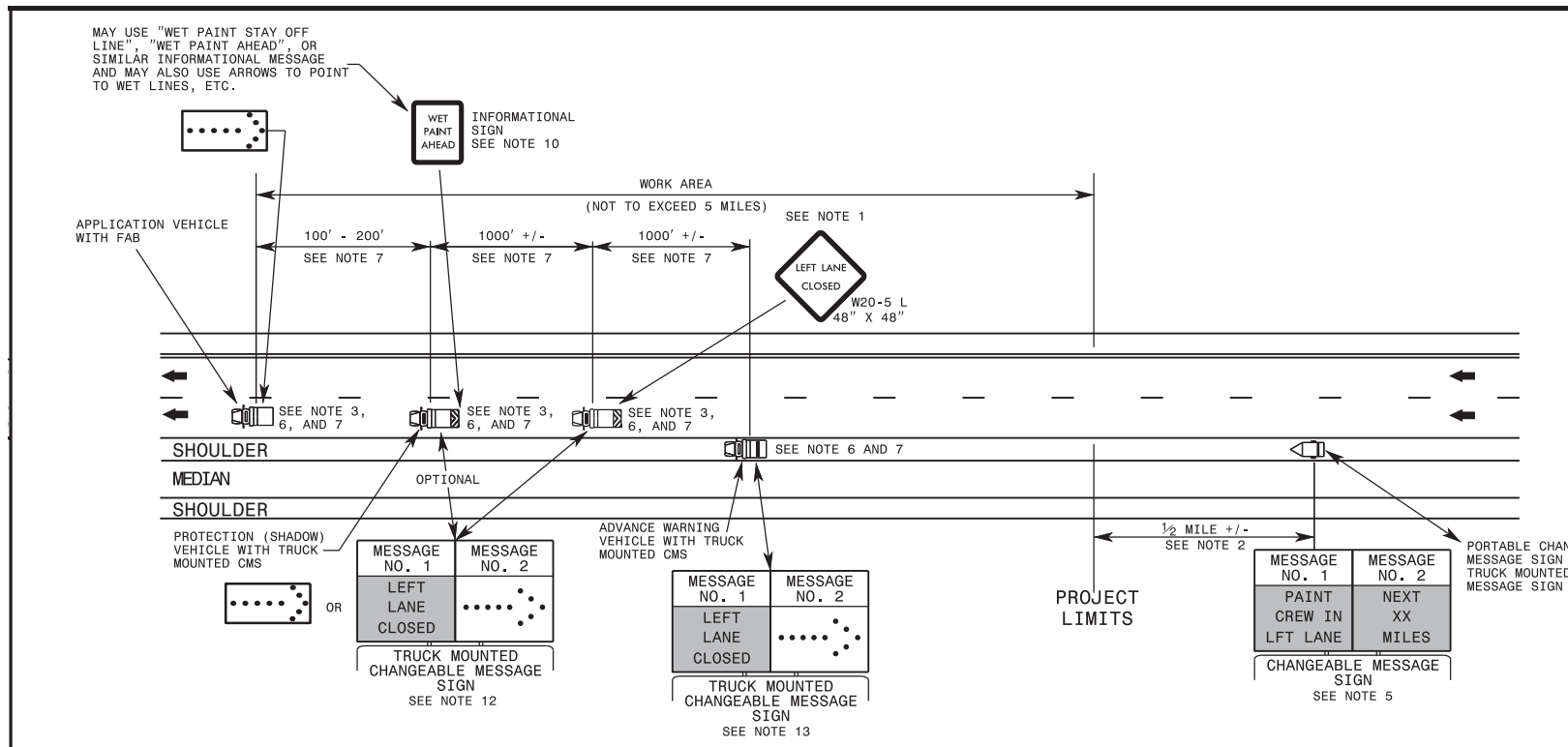
**GENERAL NOTES**

- THE FOLLOWING OPTIONS MAY BE USED FOR ADVANCE WARNING SIGNS:
  - TRUCK MOUNTED CHANGEABLE MESSAGE SIGN (CMS)
  - PORTABLE CHANGEABLE MESSAGE SIGN (CMS)
- SIGNS ON VEHICLES SHOULD BE MOUNTED A MINIMUM OF FIVE (5) FEET FROM THE GROUND AND SHOULD NOT BLOCK THE MOTORIST'S SIGHT OF THE FLASHING ARROW BOARD AND/OR WARNING LIGHTS.
- ADDITIONAL VEHICLES SHOULD BE USED IN WORK CARAVAN TO FACILITATE DRYING OF PAVEMENT MARKING MATERIAL (TMAs ARE OPTIONAL ON THESE ADDITIONAL VEHICLES). HOWEVER, THE FIRST VEHICLE MOTORISTS SEE IN THE TRAVEL LANE SHALL HAVE A TMA.
- ADJUST DISTANCE AS NEEDED TO PREVENT MOTORISTS FROM ENTERING SPACE BETWEEN THE APPLICATION AND PROTECTION VEHICLE. DISTANCE CAN BE LENGTHENED TO ACCOMMODATE SIGHT DISTANCE NEEDS.
- WORK ZONE SHOULD NOT EXCEED FIVE (5) MILES IN LENGTH. ROUND UP MILEAGE TO NEXT WHOLE MILE. RELOCATE CHANGEABLE MESSAGE SIGN SUCH THAT WORK AREA DOES NOT EXCEED 5 MILES FROM BEGIN PROJECT LIMITS.
- RADIO COMMUNICATION BETWEEN VEHICLES IS REQUIRED.
- IF WORK IS PERFORMED AT NIGHT, THE WORK AREA MUST BE ILLUMINATED WITH MACHINE AND/OR TOWER LIGHTS AS APPROVED BY THE ENGINEER.
- ALL TRAFFIC CONTROL DEVICES WILL BE CONSIDERED INCIDENTAL TO THE PAY ITEMS FOR PAVEMENT MARKING AND MARKERS.
- INFORMATIONAL SIGNS SHOULD BE ACTIVITY SPECIFIC, i.e. "PAINT CREW IN ROAD". SIGNS MAY BE RECTANGULAR OR DIAMOND SHAPE. SIGN SIZE SHOULD BE BASED ON THE MOTORIST ABILITY TO RECOGNIZE SIGN WHEN TRAVELING FIVE (5) MILES PER HOUR ABOVE POSTED SPEED LIMIT.
- TRUCK MOUNTED CHANGEABLE MESSAGE SIGNS (TMCMS) USED ON SHADOW VEHICLES FOR "IN LANE" ACTIVITIES, SHALL BE A MINIMUM SIZE OF 43" X 73". FOR ADDITIONAL SUGGESTED MESSAGING, CONTACT THE WORK ZONE TRAFFIC CONTROL SECTION.
- TRUCK MOUNTED CHANGEABLE MESSAGE SIGNS (TMCMS) USED ON VEHICLES LOCATED ON THE SHOULDER FOR ADVANCED WARNING MAY BE SMALLER THAN 43" X 73". FOR ADDITIONAL SUGGESTED MESSAGING, CONTACT THE WORK ZONE TRAFFIC CONTROL SECTION.

**LEGEND**

	PORTABLE SIGN
	DIRECTION OF TRAFFIC FLOW
	APPLICATION VEHICLE WITH WARNING LIGHT(S)
	PROTECTION VEHICLE WITH TRUCK MOUNTED ATTENUATOR (TMA) AND WARNING LIGHT(S)
	ADVANCE WARNING VEHICLE WITH TRUCK MOUNTED CHANGEABLE MESSAGE SIGN (CMS) AND WARNING LIGHT(S)
	FLASHING ARROW BOARD (96"X48" MIN.), APPROPRIATE DIRECTION INDICATED
	CHANGEABLE MESSAGE SIGN

1-18 STATE OF NORTH CAROLINA DEPT. OF TRANSPORTATION DIVISION OF HIGHWAYS RALEIGH, N.C.  
 ROADWAY STANDARD DRAWING FOR **TEMPORARY LANE CLOSURES**  
 MOVING OPERATION CARAVAN (OPERATIONS TRAVELING 3 MPH OR FASTER) PLACING PAVEMENT MARKING OR MARKERS ON MULTILANE DIVIDED ROADWAYS V 55 MPH  
 SHEET 12 OF 14  
**1101.02**



STATE OF NORTH CAROLINA  
DEPT. OF TRANSPORTATION  
DIVISION OF HIGHWAYS  
RALEIGH, N.C.

1-18

ROADWAY STANDARD DRAWING FOR

**TEMPORARY LANE CLOSURES**

MOVING OPERATION CARAVAN (OPERATIONS TRAVELING 3 MPH OR FASTER) PLACING PAVEMENT MARKING OR MARKERS ON MULTILANE ROADWAYS ≥ 60 MPH

**GENERAL NOTES**

- 1- SIGNS ON VEHICLES SHOULD BE MOUNTED A MINIMUM OF FIVE (5) FEET FROM THE GROUND AND SHOULD NOT BLOCK THE MOTORIST'S SIGHT OF THE FLASHING ARROW BOARD AND/OR WARNING LIGHTS.
- 2- CMS SIGN SPACING SHOULD BE ADJUSTED FOR HORIZONTAL AND VERTICAL CURVES, ETC. TO IMPROVE SIGHT DISTANCES.
- 3- ADDITIONAL VEHICLES SHOULD BE USED IN WORK CARAVAN TO FACILITATE DRYING OF PAVEMENT MARKING MATERIAL (TMAs ARE OPTIONAL ON THESE ADDITIONAL VEHICLES). HOWEVER, THE FIRST VEHICLE MOTORISTS SEE IN THE TRAVEL LANE SHALL HAVE A TMA.
- 4- ADJUST DISTANCE AS NEEDED TO PREVENT MOTORISTS FROM ENTERING SPACE BETWEEN THE APPLICATION AND PROTECTION VEHICLE. DISTANCE CAN BE LENGTHENED TO ACCOMMODATE SIGHT DISTANCE NEEDS.
- 5- WORK ZONE SHOULD NOT EXCEED FIVE (5) MILES IN LENGTH. ROUND UP MILEAGE TO NEXT WHOLE MILE. RELOCATE CHANGEABLE MESSAGE SIGN SUCH THAT WORK AREA DOES NOT EXCEED 5 MILES FROM BEGIN PROJECT LIMITS.
- 6- RADIO COMMUNICATION BETWEEN VEHICLES IS REQUIRED.
- 7- IF WORK IS PERFORMED AT NIGHT, THE WORK AREA MUST BE ILLUMINATED WITH MACHINE AND/OR TOWER LIGHTS AS APPROVED BY THE ENGINEER.
- 8- ALL TRAFFIC CONTROL DEVICES WILL BE CONSIDERED INCIDENTAL TO THE PAY ITEMS FOR PAVEMENT MARKING AND MARKERS.
- 9- INFORMATIONAL SIGNS SHOULD BE ACTIVITY SPECIFIC, i.e. "PAINT CREW IN ROAD". SIGNS MAY BE RECTANGULAR OR DIAMOND SHAPE. SIGN SIZE SHOULD BE BASED ON THE MOTORIST ABILITY TO RECOGNIZE SIGN WHEN TRAVELING 5 MILES PER HOUR ABOVE POSTED SPEED LIMIT.
- 10- THE CARAVAN IS TO MOVE AT 3 MPH OR GREATER TO OBTAIN THE DESIRED LEVEL OF SAFETY FOR THE MOVING OPERATION. IF AT ANYTIME AN VEHICLE STOPS DURING THE OPERATION, THE REMAINDER OF THE CARAVAN SHALL CONTINUE MOVING AND THE APPLICATION VEHICLE SHALL RESUME WORK OPERATIONS WITHIN 60 SECONDS. OTHERWISE, ALL VEHICLES ARE TO BE REMOVED FROM THE TRAVEL LANE AND THE OPERATION RESET.
- 11- TRUCK MOUNTED CHANGEABLE MESSAGE SIGNS (TMCMS) USED ON SHADOW VEHICLES FOR "IN LANE" ACTIVITIES, SHALL BE A MINIMUM SIZE OF 43" X 73". FOR ADDITIONAL SUGGESTED MESSAGING, CONTACT THE WORK ZONE TRAFFIC CONTROL SECTION.
- 12- TRUCK MOUNTED CHANGEABLE MESSAGE SIGNS (TMCMS) USED ON VEHICLES LOCATED ON THE SHOULDER FOR ADVANCED WARNING MAY BE SMALLER THAN 43" X 73". FOR ADDITIONAL SUGGESTED MESSAGING, CONTACT THE WORK ZONE TRAFFIC CONTROL SECTION.

**LEGEND**

	PORTABLE SIGN
	DIRECTION OF TRAFFIC FLOW
	APPLICATION VEHICLE WITH WARNING LIGHT(S)
	PROTECTION VEHICLE WITH TRUCK MOUNTED ATTENUATOR (TMA) AND WARNING LIGHT(S)
	ADVANCE WARNING VEHICLE WITH TRUCK MOUNTED CHANGEABLE MESSAGE SIGN (CMS) AND WARNING LIGHT(S)
	FLASHING ARROW BOARD (96" X 48" MIN.), APPROPRIATE DIRECTION INDICATED
	CHANGEABLE MESSAGE SIGN